

Member Guide

Gold / Silver



Welcome to Ambetter from Western Sky Community Care!

We are happy to have you as a member. Use this member guide to help you take charge of your health and get the most out of your benefits.

Create Your Online Member Account

1. Set up your secure Online Member Account to get the most out of your plan.
2. Do this by visiting the Login page on **Ambetter.WesternSkyCommunityCare.com**.

Your member account gives you access to see your benefits and coverage information, access your Schedule of Benefits, claims information, Digital ID, and more – all in one convenient place.

Payment Information

All Ambetter from Western Sky Community Care members make their monthly premium payments through the New Mexico Health Insurance Exchange. Go to **www.bewellnm.com**, or call 1-833-862-3935 to pay over the phone.

Learn More About Your Core Member Plan

Ambetter Health makes it easier for you to get the care you deserve – from the doctors you trust. We partner with Primary Care Providers (PCPs), specialists and other medical providers. To search our online Provider Directory, visit **guide.ambetterhealth.com**.

Remember to select an in-network PCP!

In-network or network provider means a physician or provider who is identified in the most current list for the network shown on your Member ID Card. Services received from an **out-of-network provider** are not covered, except as specifically stated in your EOC.



Learn about how to get the most out of your plan. Refer to your Evidence of Coverage (EOC) for information on referrals, prior authorizations and more by visiting:

[Ambetter.WesternSkyCommunityCare.com/health-plans.html](https://www.ambetterwesternskycare.com/health-plans.html)

Ambetter from Western Sky Community Care is underwritten by Western Sky Community Care, Inc., which is a Qualified Health Plan issuer in the New Mexico Health Insurance Marketplace. This is a solicitation for insurance. © 2023 Western Sky Community Care, Inc. All rights reserved. *Formerly known as Ambetter Telehealth. Cost sharing may apply when using Virtual 24/7 Care. Virtual 24/7 Care cost share does not apply to HSA plans until the deductible is met and is only applicable when used through the Virtual 24/7 Care program. Ambetter Health does not provide medical care. Medical care is provided by individual providers which are independent contractors and not agents of Ambetter Health. **Healthcare-related costs will vary by member and the plan in which you are enrolled. Funds expire immediately upon termination of insurance coverage. My Health Pays® rewards cannot be used to pay premiums or for cost sharing purposes.

Member Guide

Gold / Silver



Stay Healthy and Stay Well with Ambetter

Get the most from your Ambetter Health insurance with our health and wellness benefits. Ambetter Health offers the benefits you need to take control of your health today. Learn more about the benefits below and more by visiting

Ambetter.WesternSkyCommunityCare.com/health-plans/our-benefits.html.

- Mail-Order Pharmacy Program
- Virtual 24/7 Care*
- Essential Health Benefits
- My Health Pays® Rewards Program**
- Care Management Services
- Start Smart for Your Baby®
- Health Management Programs

My Health Pays® Rewards Program

You love being healthy, we love paying you for it. Our My Health Pays program is a rewards program that pays you for the healthy decisions you're already making each and every day.

Learn more at Ambetter.WesternSkyCommunityCare.com.



Eat Right



Move More



Be Well



Save Smart



Member Services

If you have questions, call us at:

1-833-945-2029 (TTY 711).

We are here to help. We're available Monday through Friday, 8 a.m. to 8 p.m. local time.



On The Web

For more information, visit:

Ambetter.WesternSkyCommunityCare.com.



Free Interpreter Services

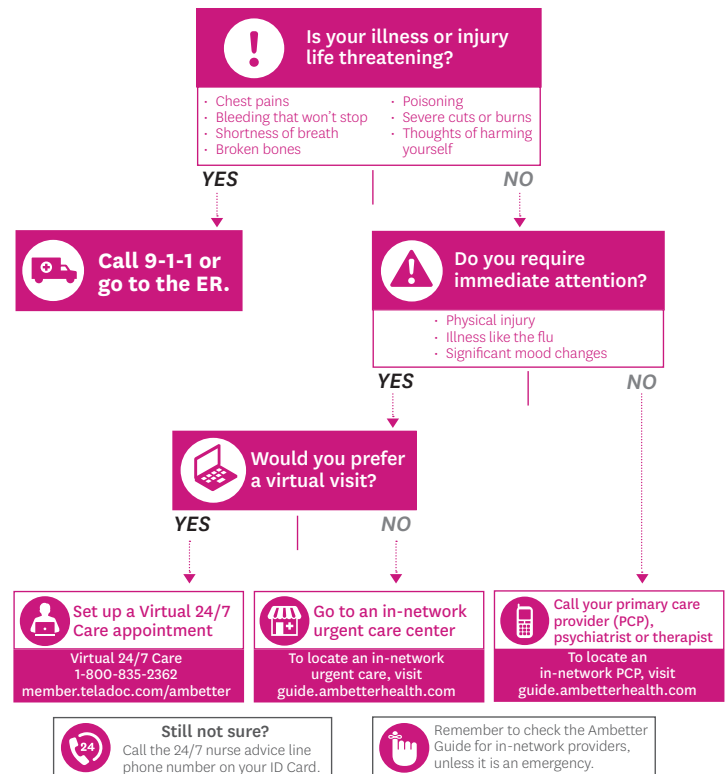
Interpreter services include languages other than English. Call Member Services for more information. This service allows you and your provider to talk about your medical or behavioral health concerns in a way that is most comfortable for you. Members who are blind or visually impaired and need help with interpretation can call Member Services for an oral interpretation.



Enrollment

You must contact BeWellnm to update your enrollment information (your date of birth, address, income, or life changes) or to end coverage with Ambetter Health. Visit bewellnm.com or call: 1-833-862-3935 (TTY: 711).

Where to go for care?



Statement of Non-Discrimination

Ambetter from Western Sky Community Care is underwritten by Western Sky Community Care, Inc., which is a Qualified Health Plan issuer in the New Mexico Health Insurance Marketplace. Western Sky Community Care, Inc. complies with applicable Federal civil rights laws and does not discriminate on the basis of race, color, national origin (including limited English proficiency and primary language), age, disability, or sex (including pregnancy, sexual orientation, gender identity, or sex characteristics). This is a solicitation for insurance. © 2023 Western Sky Community Care, Inc. All rights reserved. [Ambetter.WesternSkyCommunityCare.com](https://www.Ambetter.WesternSkyCommunityCare.com)

If you, or someone you are helping, have questions about Ambetter from Western Sky Community Care, and are not proficient in English, you have the right to get help and information in your language at no cost and in a timely manner. If you, or someone you are helping, have an auditory and/or visual condition that impedes communication, you have the right to receive auxiliary aids and services at no cost and in a timely manner. To receive translation or auxiliary services, please contact Member Services at 1-833-945-2029 (TTY 711). If you believe that Western Sky Community Care, Inc. has failed to provide these services or discriminated in another way on the basis of race, color, national origin (including limited English proficiency and primary language), age, disability, or sex (including pregnancy, sexual orientation, gender identity, or sex characteristics), please contact Member Services at 1-833-945-2029 (TTY 711). You may also submit a grievance by phone to 1-833-945-2029 (TTY 711). For information on filing a discrimination complaint directly with the U.S. Department of Health and Human Services, Office of Civil Rights, please visit <https://ocrportal.hhs.gov/ocr/smartscreen/main.jsf>.

AMB23-NM-C-00056

Ambetter from Western Sky Community Care is underwritten by Western Sky Community Care, Inc., which is a Qualified Health Plan issuer in the New Mexico Health Insurance Marketplace. This is a solicitation for insurance. © 2023 Western Sky Community Care, Inc. All rights reserved.



FROM

western sky
community care.

English:	If you, or someone you are helping, have questions about Ambetter from Western Sky Community Care, and are not proficient in English, you have the right to get help and information in your language at no cost and in a timely manner. If you, or someone you are helping, have an auditory and/or visual condition that impedes communication, you have the right to receive auxiliary aids and services at no cost and in a timely manner. To receive translation or auxiliary services, please contact Member Services at 1-833-945-2029 (TTY 711).
Spanish:	Si usted, o alguien a quien está ayudando, tiene preguntas acerca de Ambetter de Western Sky Community Care y no domina el inglés, tiene derecho a obtener ayuda e información en su idioma sin costo alguno y de manera oportuna. Si usted, o alguien a quien está ayudando, tiene un impedimento auditivo o visual que le dificulta la comunicación, tiene derecho a recibir ayuda y servicios auxiliares sin costo alguno y de manera oportuna. Para recibir servicios auxiliares o de traducción, comuníquese con Servicios para Miembros al 1-833-945-2029 (TTY 711).
Navajo:	Daa ni, doodaii la'da ni'bineesh'a dzaadi, be'esdzááh na'ídkíd 'aa Ambetter from Western Sky Community Care, dóó bineesh'a góó t'oo 'adee naash'ne di Bilagaana bizaad, ni be'esdzááh la' t'áá 'áko góó bil hánish'áásh dzaadi dóó bika'ashkíd di níhí saad gi 'ádin t'áadoo bááhiinígoo dóó di léi na'alkid lahgo 'át'éeego. Daa ni, doodaii la'da ni'bineesh'a dzaadi, be'esdzááh la nish'j dóó/doodaii na'ach'aah 'ahoosoli eii biniish'l'aah bil'alnaa'awlo, ni be'esdzááh la' t'aa 'ako góó baa yíltsoós 'ooljee'lahgo 'anaa'niil bika'iishyeed dóó tse'esgizii gi 'ádin t'áadoo baahilinígoo dóó di léi na'alkid lahgo 'át'éeego. Góó yíltsoós saad náánálahdéé' doodaii 'ooljee'lahgo 'anaa'niil tse'esgizii, t'aa shoodi deistse' 'Anishtah Tse'esgizii gi 1-833-945-2029 (TTY 711).
Vietnamese:	Nếu quý vị hoặc người mà quý vị đang giúp đỡ có câu hỏi về Ambetter from Western Sky Community Care và không thành thạo tiếng Anh, quý vị có quyền được trợ giúp và nhận thông tin bằng ngôn ngữ của mình miễn phí và kịp thời. Nếu quý vị hoặc người mà quý vị đang giúp đỡ mắc bệnh về thính giác và/hoặc thị giác gây cản trở giao tiếp, quý vị có quyền được nhận các hỗ trợ và dịch vụ phụ trợ miễn phí và kịp thời. Để nhận dịch vụ thông dịch hoặc dịch vụ phụ trợ, vui lòng liên hệ bộ phận Dịch Vụ Thành Viên theo số 1-833-945-2029 (TTY 711).
German:	Falls Sie oder jemand, dem Sie helfen, Fragen zu Ambetter from Western Sky Community Care hat und nicht Englisch spricht, haben Sie das Recht, kostenlos und zeitnah Hilfe und Informationen in Ihrer Sprache zu erhalten. Falls Sie oder jemand, dem Sie helfen, eine Hör- und/oder Sehbeeinträchtigung hat, die die Kommunikation beeinflusst, haben Sie das Recht, kostenlos und zeitnah zusätzliche Hilfe und Dienstleistungen zu erhalten. Um eine Übersetzung oder zusätzliche Dienstleistungen zu erhalten, wenden Sie sich an den Kundendienst unter 1-833-945-2029 (TTY 711).
Chinese:	如果您·或是您正在協助的對象·有關於 Ambetter from Western Sky Community Care 方面的問題·且不精通英語·您有權利免費並及時以您的母語獲幫助和訊息。如果您·或您正在協助的對象有聽力和/或視力上的問題·阻礙了溝通·您有權利免費並及時獲得輔助支援與服務。若要取得翻譯或輔助服務·請聯絡會員服務部·電話是 1-833-945-2029 (TTY 711)。
Arabic:	إذا كان لديك أو لدى شخص تساعد أسئلة حول Ambetter from Western Sky Community Care، ولم تكن بارعا بالغة الإنكليزية، ف لديك الحق في الحصول على المساعدة والمعلومات بلغتك من دون أي تكلفة وفي الوقت المناسب. إذا كنت أنت أو أي شخص تساعد تعاني من حالة سمعية و/أو بصرية تعيق التواصل، ف لديك الحق في تلقي مساعدات وخدمات إضافية من دون أي تكلفة وفي الوقت المناسب. لتلقي خدمات الترجمة أو خدمات إضافية، يرجى الاتصال ب خدمات الأعضاء على (TTY 1-833-945-2029 (711).
Korean:	귀하 또는 귀하의 도움을 받는 분이 Ambetter from Western Sky Community Care에 대한 질문이 있는 경우 영어에 능숙하지 않으시면 해당 언어로 시의적절하게 무료 지원과 정보를 받을 권리가 있습니다. 귀하 또는 귀하의 도움을 받는 분이 청각 및/또는 시각적으로 의사소통에 장애가 있는 경우 시의적절하게 무료 보조 도구 및 서비스를 받을 권리가 있습니다. 번역 또는 보조 서비스를 받으시려면 1-833-945-2029(TTY 711)번으로 가입자 서비스부에 연락하십시오.
Tagalog:	Kung ikaw, o ang iyong tinutulongan, ay may mga katanungan tungkol sa Ambetter from Western Sky Community Care, at hindi ka mahusay sa Ingles, may karapatan ka na makakuha ng tulong at impormasyon sa iyong wika nang walang gastos at sa maagap na paraan. Kung ikaw, o ang iyong tinutulongan, ay may kondisyon sa pandinig at/o paningin na nakakaapekto sa komunikasyon, may karapatan kang makatanggap ng mga karagdagang tulong at serbisyo nang walang gastos at sa maagap na paraan. Para makatanggap ng mga serbisyo sa pagsasalin o mga karagdagang serbisyo, mangyaring makipag-ugnayan sa Mga Serbisyo para sa Miyembro sa 1-833-945-2029 (TTY 711).
Japanese:	ご自身やあなたが介護している他の人が、Ambetter from Western Sky Community Careについてご質問をお持ちの場合、英語に自信がなくても無料かつタイムリーにご希望の言語でヘルプや情報を得ることができます。ご自身や、あなたが介護している他の人の聴覚や視覚の状態のためやり取りが難しい場合でも、無料かつタイムリーに補助サービスを受けることができます。翻訳や補助サービスを受けるには、1-833-945-2029 (TTY 711)のメンバーサービスにご連絡ください。
French:	Si vous-même ou une personne que vous aidez avez des questions à propos d'Ambetter from Western Sky Community Care et que vous ne maîtrisez pas l'anglais, vous pouvez bénéficier gratuitement et en temps utile d'aide et d'informations dans votre langue. Si vous-même ou une personne que vous aidez souffrez d'un trouble auditif ou visuel qui entrave la communication, vous pouvez bénéficier gratuitement et en temps utile d'aides et de services auxiliaires. Pour profiter de services de traduction ou de services auxiliaires, veuillez contacter Services aux membres au 1-833-945-2029 (TTY 711).
Italian:	Se Lei o una persona a cui sta fornendo assistenza ha domande su Ambetter from Western Sky Community Care e non ha una perfetta padronanza della lingua inglese, ha il diritto di ricevere aiuto e informazioni nella Sua lingua gratuitamente e tempestivamente. Se Lei o una persona a cui sta fornendo assistenza presenta una condizione uditiva e/o visiva che impedisce la comunicazione, ha il diritto di ricevere servizi ausiliari gratuitamente e tempestivamente. Per ricevere una traduzione o un servizio ausiliario, contatti i Servizi per i membri al numero 1-833-945-2029 (TTY 711).

Russian:	<p>Если у вас или у лица, которому вы помогаете, возникли какие-либо вопросы о программе страхования Ambetter from Western Sky Community Care, при этом вы недостаточно хорошо владеете английским языком, вы имеете право на бесплатную и своевременную помощь и информацию на своем родном языке. Если у вас или у лица, которому вы помогаете, наблюдается какое-либо нарушение слуха и/или зрения, которое препятствует коммуникации, вы имеете право на бесплатные и своевременные вспомогательные услуги и помощь. Для получения услуг перевода или вспомогательных услуг обратитесь в отдел обслуживания участников программы страхования по номеру 1-833-945-2029 (TTY 711).</p>
Hindi:	<p>अगर आप या कोई ऐसा व्यक्ति जिसकी आप सहायता कर रहे हैं, के पास Ambetter from Western Sky Community Care से जुड़े प्रश्न हैं और आप दोनों अंग्रेज़ी में माहिर नहीं हैं, तो आपको अपनी भाषा में मुफ्त और समय पर सहायता और जानकारी प्राप्त करने का अधिकार है. अगर आपको या किसी ऐसे व्यक्ति को जिसकी आप मदद कर रहे हैं, सुनने और/या देखने में समस्या होती है और इससे बातचीत बाधित होती है, तो आपको बिना किसी लागत के और समय पर सहायक सहायता और सेवाएं प्राप्त करने का अधिकार है. अनुवाद या सहायक सेवाएं प्राप्त करने के लिए कृपया 1-833-945-2029 (TTY 711) पर सदस्य सेवाएं से संपर्क करें.</p>
Persian:	<p>اگر شما یا فردی که دارید به او کمک می‌کنید، سوالی درباره Ambetter from Western Sky Community Care دارید، و انگلیسی نمی‌دانید، حق دارید کمک و اطلاعات را به زبان خودتان به رایگان و به موقع دریافت کنید. اگر شما یا فردی که دارید به او کمک می‌کنید مشکلات شنوایی یا بینایی دارد که برقراری ارتباط را سخت می‌کند، حق دارید کمک‌ها و خدمات امدادی را به زبان خودتان به رایگان و به موقع دریافت کنید. برای دریافت کمک‌ها و خدمات امدادی لطفاً با خدمات اعضا به شماره (TTY 1-833-945-2029) تماس بگیرید.</p>
Thai:	<p>หากคุณหรือคนที่คุณกำลังให้ความช่วยเหลือมีคำถามเกี่ยวกับ Ambetter from Western Sky Community Care และไม่ชำนาญในการใช้ภาษาอังกฤษ คุณมีสิทธิ์ที่จะขอรับความช่วยเหลือและข้อมูลในภาษาของคุณโดยไม่เสียค่าใช้จ่ายอย่างทันท่วงที หากคุณหรือคนที่คุณกำลังให้ความช่วยเหลือมีภาวะด้านการฟังและ/หรือการมองเห็นที่เป็นอุปสรรคต่อการสื่อสาร คุณมีสิทธิ์ที่จะขอรับความช่วยเหลือและบริการเสริมโดยไม่เสียค่าใช้จ่ายอย่างทันท่วงที หากต้องการบริการด้านการแปลหรือบริการเสริม โปรดติดต่อ บริการสำหรับสมาชิก ที่หมายเลข 1-833-945-2029 (TTY 711)</p>

AMB23-NM-C-00057